



# Working in Partnership

The final mile: Connecting an impact-based warning service to decision making

**Paul Davies, Met Office Chief Meteorologist**



# Typhoon Haiyan



PHILIPPINE AIR FORCE VIA REUTERS





# WMO Fact Finding Mission : summary and conclusions

**Going the extra mile – can science deliver??**

“I would rather die with my refrigerator than let it  
be taken by a storm surge”

**2014**

**STAKEHOLDER MEETING, MANILA**



# Severe Weather Warnings Colour Codes

	<b>NO SEVERE WEATHER EXPECTED</b> Keep up to date with latest forecast
	<b>BE AWARE</b> Remain alert and keep up to date with latest forecast
	<b>BE PREPARED</b> Remain vigilant, keep up to date with latest forecast and take precautions where possible
	<b>TAKE ACTION</b> Remain extra vigilant, keep up to date with latest forecast. Follow orders and any advice given by authorities and be prepared for extraordinary measures



# Advice on impacts

Flood Risk Matrix					
(River, tidal, coastal, surface water and groundwater flooding)					
Likelihood	High				
	Medium				✓
	Low				
	Very Low				
		Minimal	Minor	Significant	Severe
		Potential impacts			



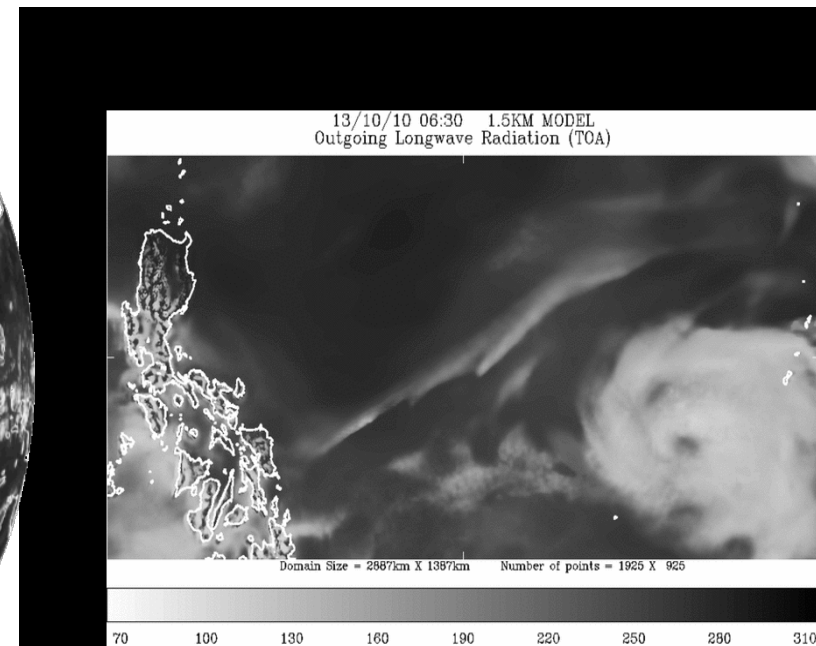
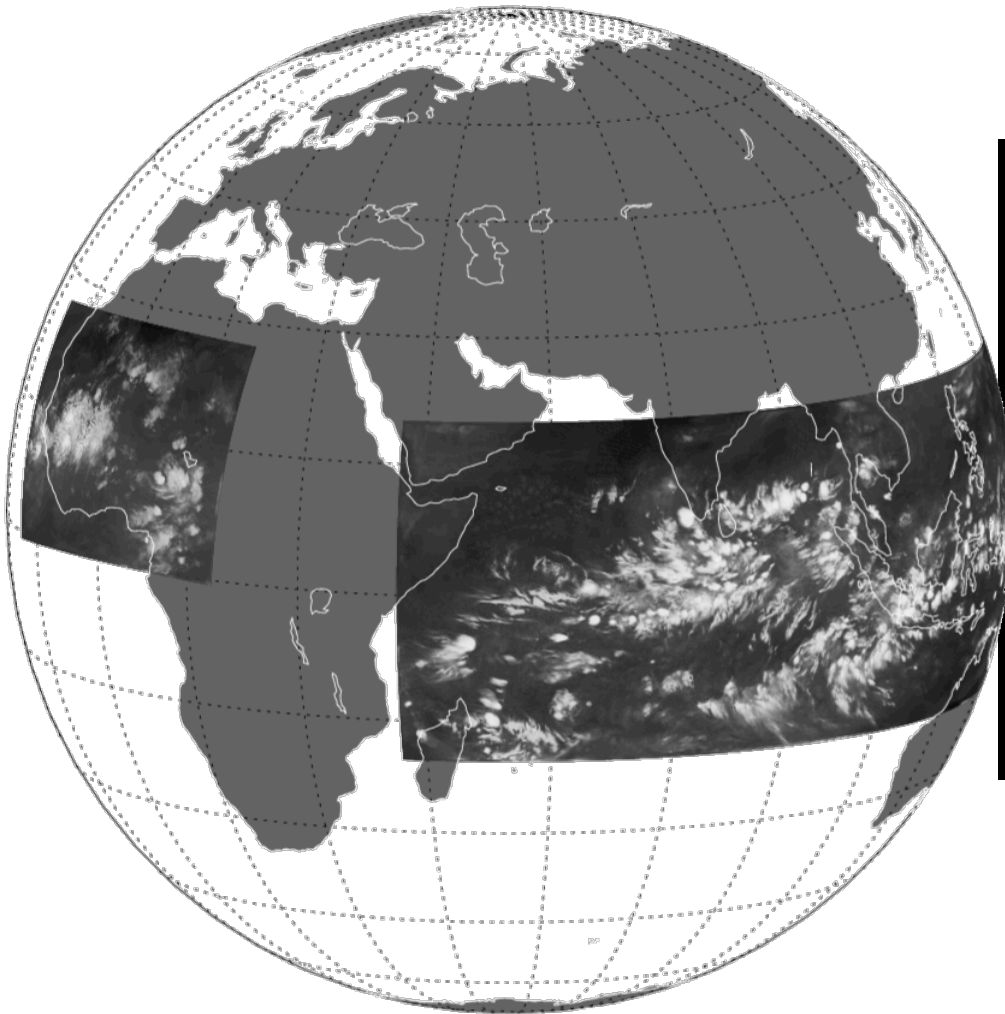
***“...bridging the Valley of Death...through effective translation and application of science”***





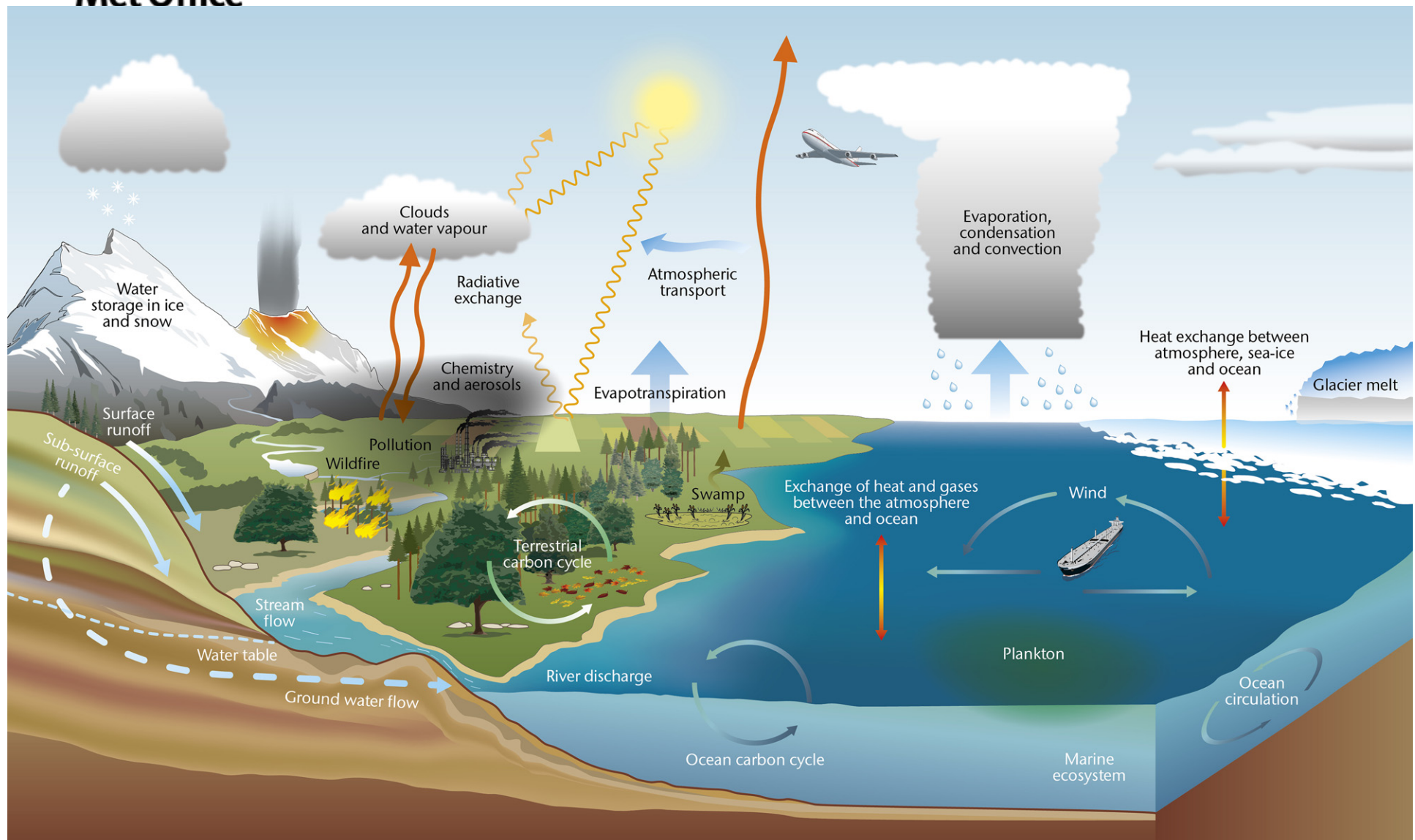
# Big Data, Big Science

Each day the Met Office processes and stores **106 million observations**, completes **20 quadrillion ( $10^{15}$ ) calculations**, archives **10 Tera ( $10^{12}$ ) bytes of model data** and produces **4 million forecasts** per day



# Environmental Prediction

Modelling the 'Earth System' ...





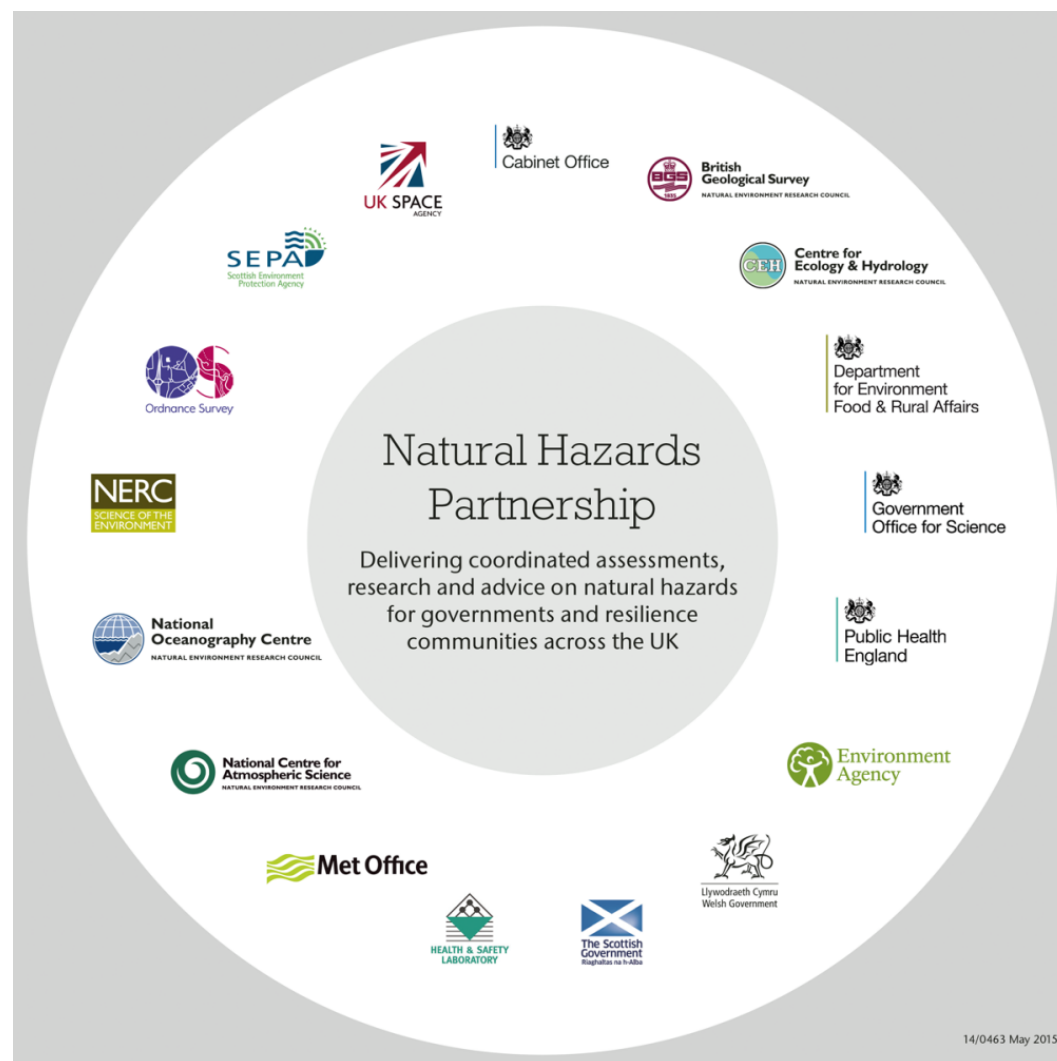
# Recognising the challenges

Increasing our vulnerability and exposure





# Working in Partnership





**Met Office**

